



BUDGET WORKSHOP – APRIL 5, 2016

Open Space and Regional Parks Commission





COUNTY BUDGET



WASHOE COUNTY BUDGET OVERVIEW FY2015-16

The Washoe County Board of Commissioners adopted a \$593.91 million budget for fiscal year FY2015-16.

The Washoe County budget provides funding for 24 County departments, including eight elected offices, the Washoe County Health District, Juvenile Services, District Courts and the Justice Courts.



COUNTY BUDGET

OVERALL

21 Governmental Funds & 6 Proprietary Funds
Washoe County FY2015-16 Budget:
\$593,909,997

\$315,290,329 – General Fund
\$194,433,325 – Special Revenue Funds
\$84,186,343 – Proprietary Funds

Full Time Equivalent Employees
• 2,554
• Increase 60 positions for FY2015-16

Ending Fund Balance
• 8.3%

Fund Balance



Employee Growth



Washoe County will continue to maintain a strong and healthy fund balance for FY2015-16 and is committed to providing quality customer service for its residents while responding to and facilitating new development in the region. The County has reduced its debt burden over the last seven years and has maintained the highest bond rating in Northern Nevada.



COUNTY BUDGET

GENERAL FUND

The General Fund is the primary operating fund of the County government. This fund accounts for all financial resources and liabilities of the County, except those required to be accounted for in other funds by special regulations, restrictions or limitations.

Total



\$315,290,329

% REVENUES





COUNTY BUDGET



Property & Room Taxes
49%

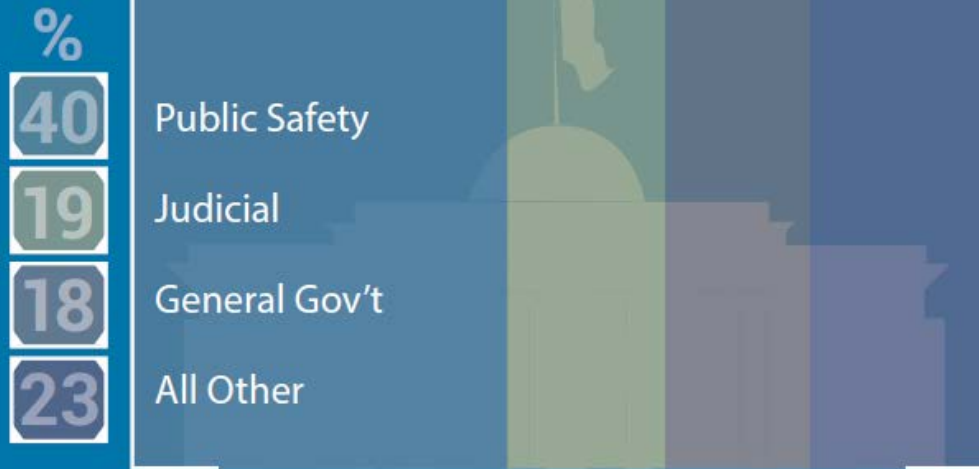
Consolidated Tax
30%

Fees
8%

All Other
13%



COUNTY BUDGET



FUNCTIONAL EXPENDITURES

The General Fund encompasses operations such as public safety, judicial functions such as District and Justice Courts, District Attorney, public defense, general government and finance functions, library services, parks and recreation, and many other functions.



COUNTY BUDGET



ENTERPRISE FUNDS

Enterprise Funds help keep track of operations that are financed and managed in a manner similar to private business.

Washoe County owns and operates Sierra Sage and Washoe Golf courses.

Washoe County Utilities is comprised of sewer, storm water and reclaimed water management services. Washoe County merged its water utility with Truckee Meadows Water Authority on January 1, 2015.



COUNTY BUDGET

CAPITAL IMPROVEMENT PLAN

The Capital Improvement Plan (CIP) is a five year plan to maintain the County's existing infrastructure and buildings. The CIP is also used to help purchase new facilities, fund road projects, public safety and regional communications projects, just to name a few. Any project over \$100,000 is budgeted in the CIP.

Utilities Funds
\$17.6 Million

Capital
Facilities
Tax Fund
\$9.8 Million

Other
Funds
\$9.7 Million

Capital Improvement Fund
\$4.7 Million

Parks Capital Fund
\$4.2 Million

Equipment
Services
Fund
\$2.4 Million



COUNTY BUDGET

Total



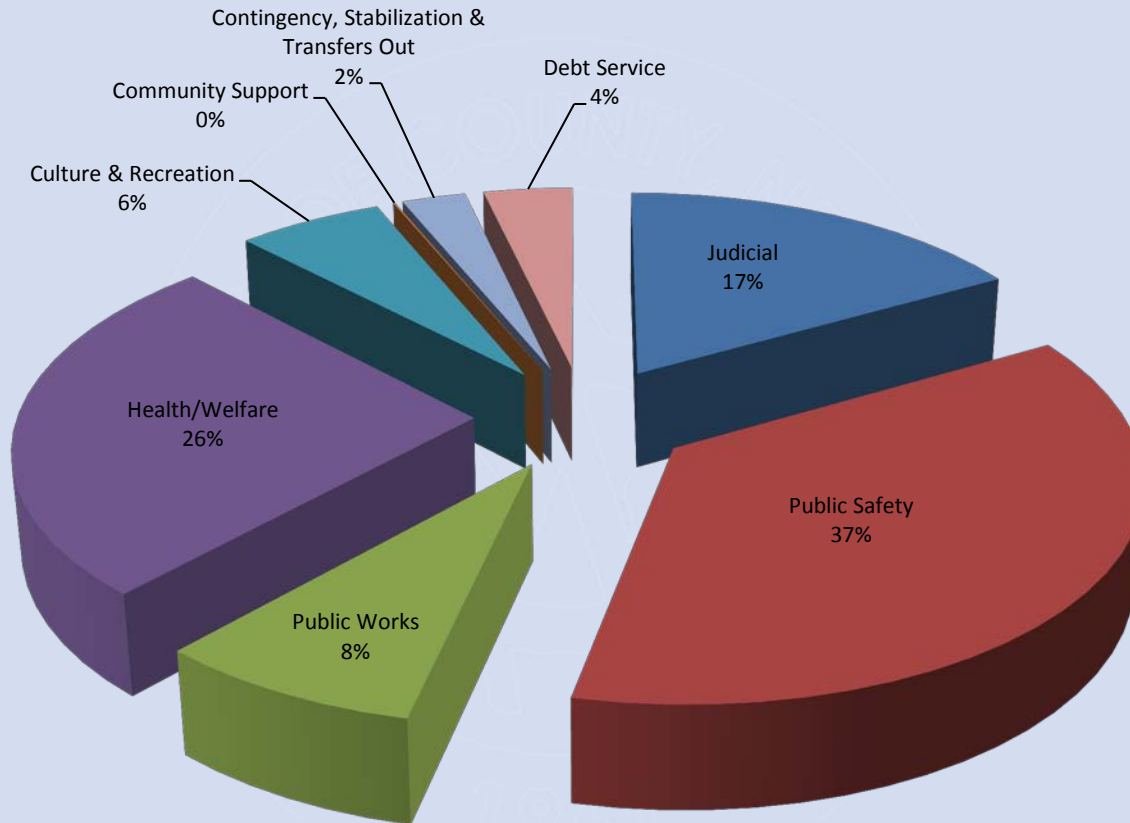
\$48.4 Million

Total Number
of CIP Projects

46



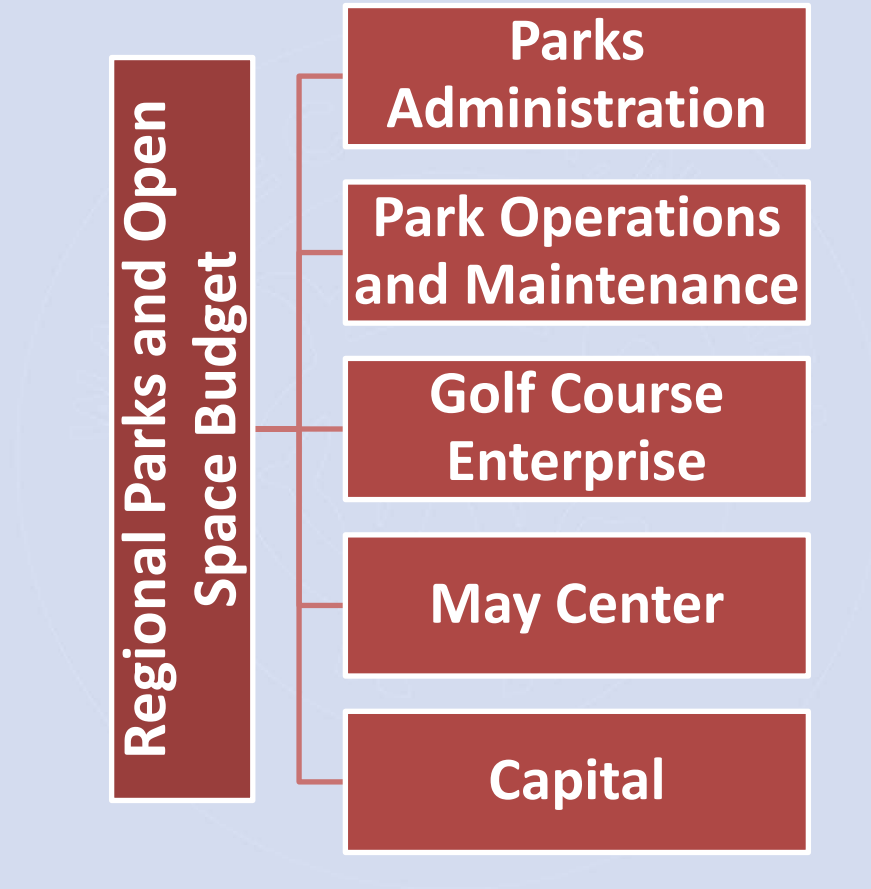
FY 16 COUNTY BUDGET



FY 15-16 General Fund Adopted Budget Expenditures by Function

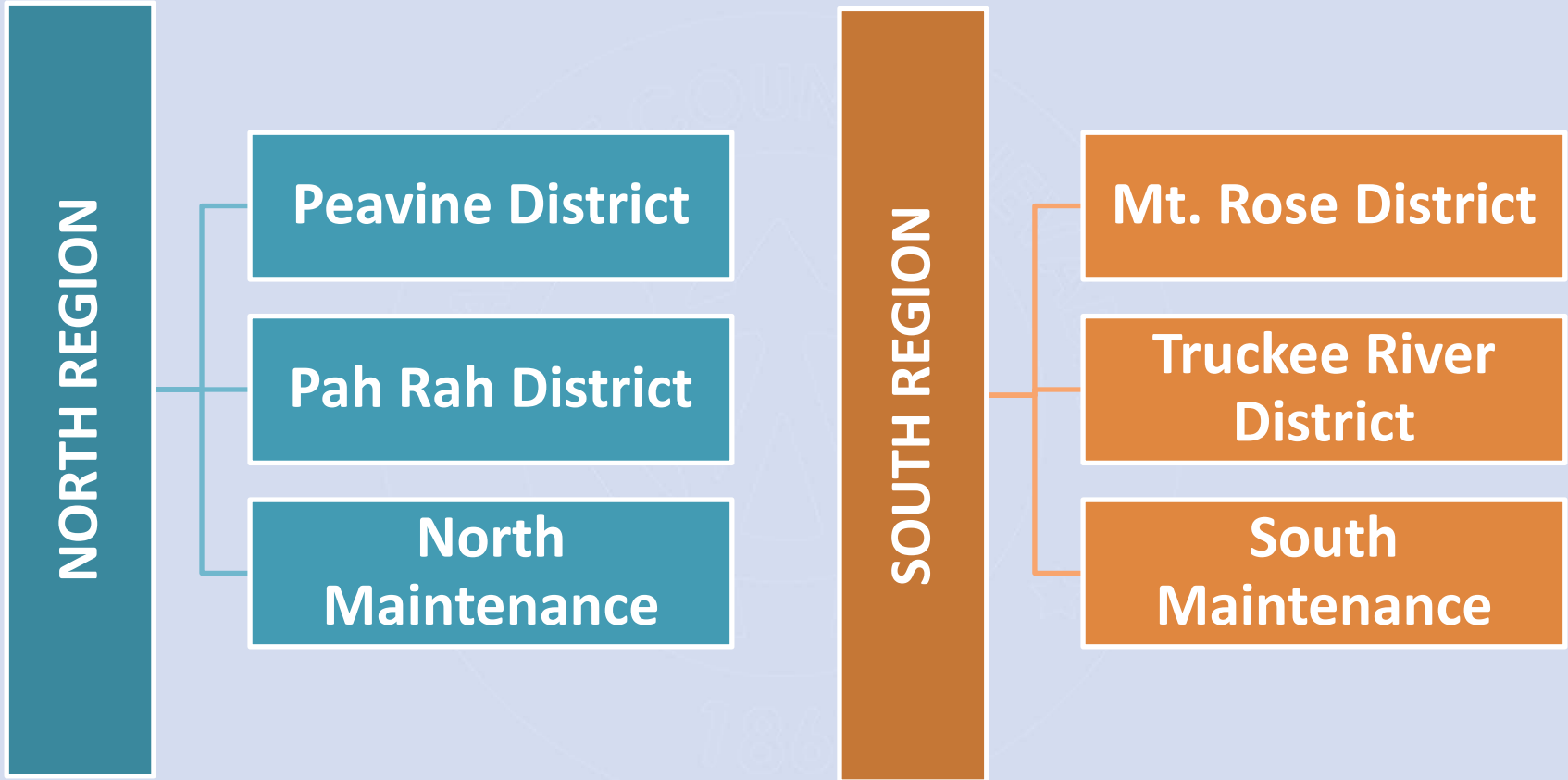


PARKS BUDGET





PARK OPERATIONS





NORTH REGION

Pah Rah District

Gator Swamp Park

Desert Winds Park

Eagle Canyon Park

Lazy 5 Regional Park

Sky Ranch Park

Regional Shooting Facility

Lockwood Park

Pah Rah Trail Head

Total Developed Acres: 101.9

Total Sports Turf Acres: 21.5

Peavine District

Westbrook Community Center

Cold spring Community Center

North Valleys Regional Park

Silver Knolls Park

Sierra Rock Park

Swan Lake Park

Sun Valley Regional Park

Lemmon Valley Park

Lemmon Valley Horseman's Park

Forest Park

Cold Springs Village Center Park

Total Developed Acres: 136

Total Sports Turf Acres: 31

Developed acres per Maintenance Worker = 47

Sports field turf per Maintenance Worker = 10.5



SOUTH REGION

Truckee River District

Ambrose Park
Anderson Park
Bartley Ranch Regional Park
Crystal Peak Park
Betsy Caughlin Donnelly Park
Dorostkar Park
Hidden Valley Regional Park
Mayberry Park
Mogul Park
Rancho San Rafael Regional Park
Rivermount Park
Verdi School Park

Total Developed Acres: 158

Total Sports Turf Acres: 12

Mt. Rose District

Arrow Creek Park
Bailey Creek Park
Bowers Mansion Regional Park
Callahan Park
Davis Creek Regional Park
Ellen's Park
Galena Creek Regional Park
New Washoe City Park
Pleasant Valley Park
Saddlehorn Park
South Valleys Regional Park
Thomas Creek Park
Virginia Foothills Park
Whites Creek Park
Wilson Commons Park

Total Developed Acres: 158.31

Total Sports Turf Acres: 62.5

Developed acres per Maintenance Worker = 56
Sports field turf per Maintenance Worker = 14.39



NON-GENERAL FUNDS



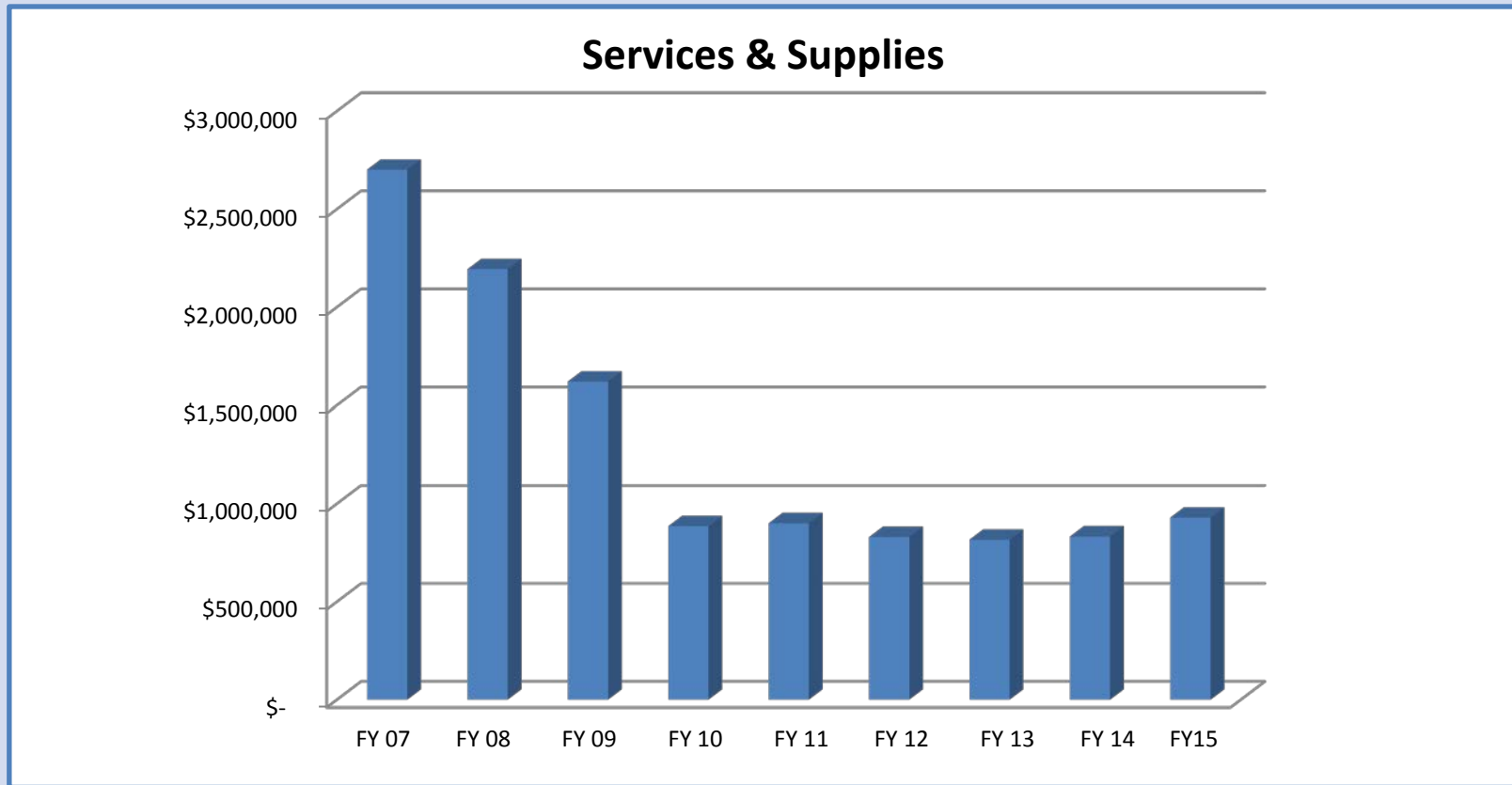


STAFF STRUCTURE





BUDGET TRENDS

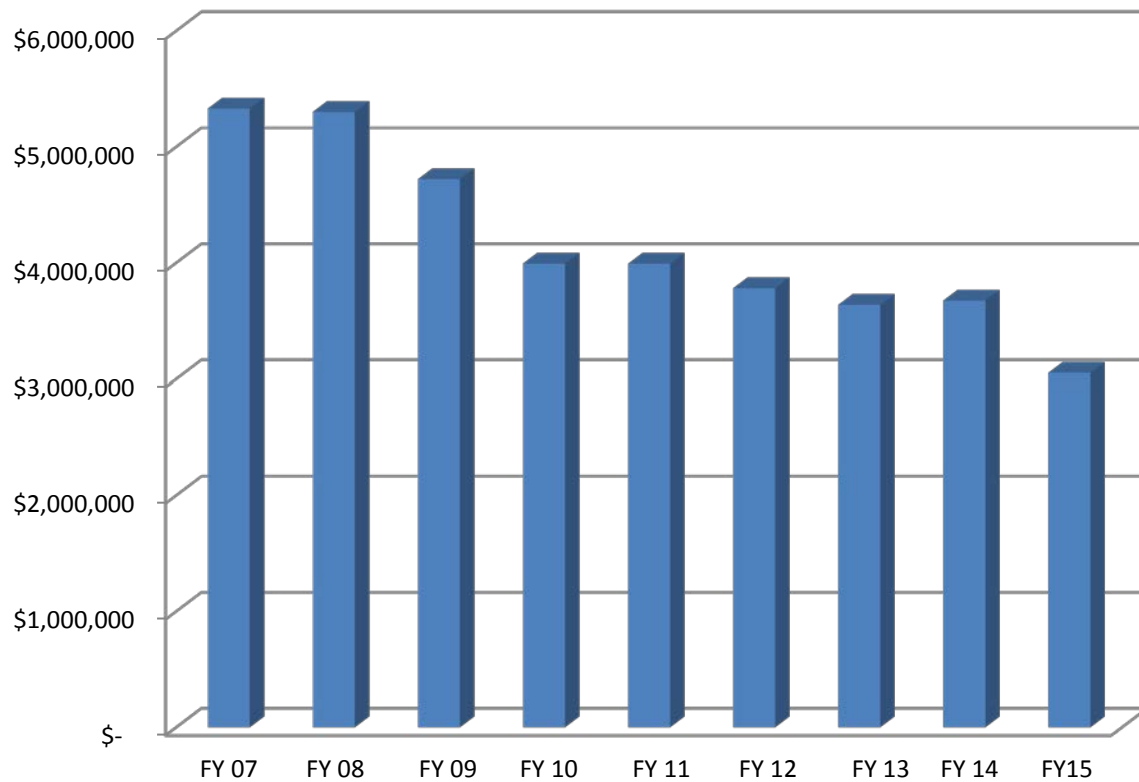


NOTE: The increase in 2015 services & supplies is due to overhead item increases such as \$46,479 equipment services and prior year encumbrance carry-over, NOT due to increases in direct parks line item budgets



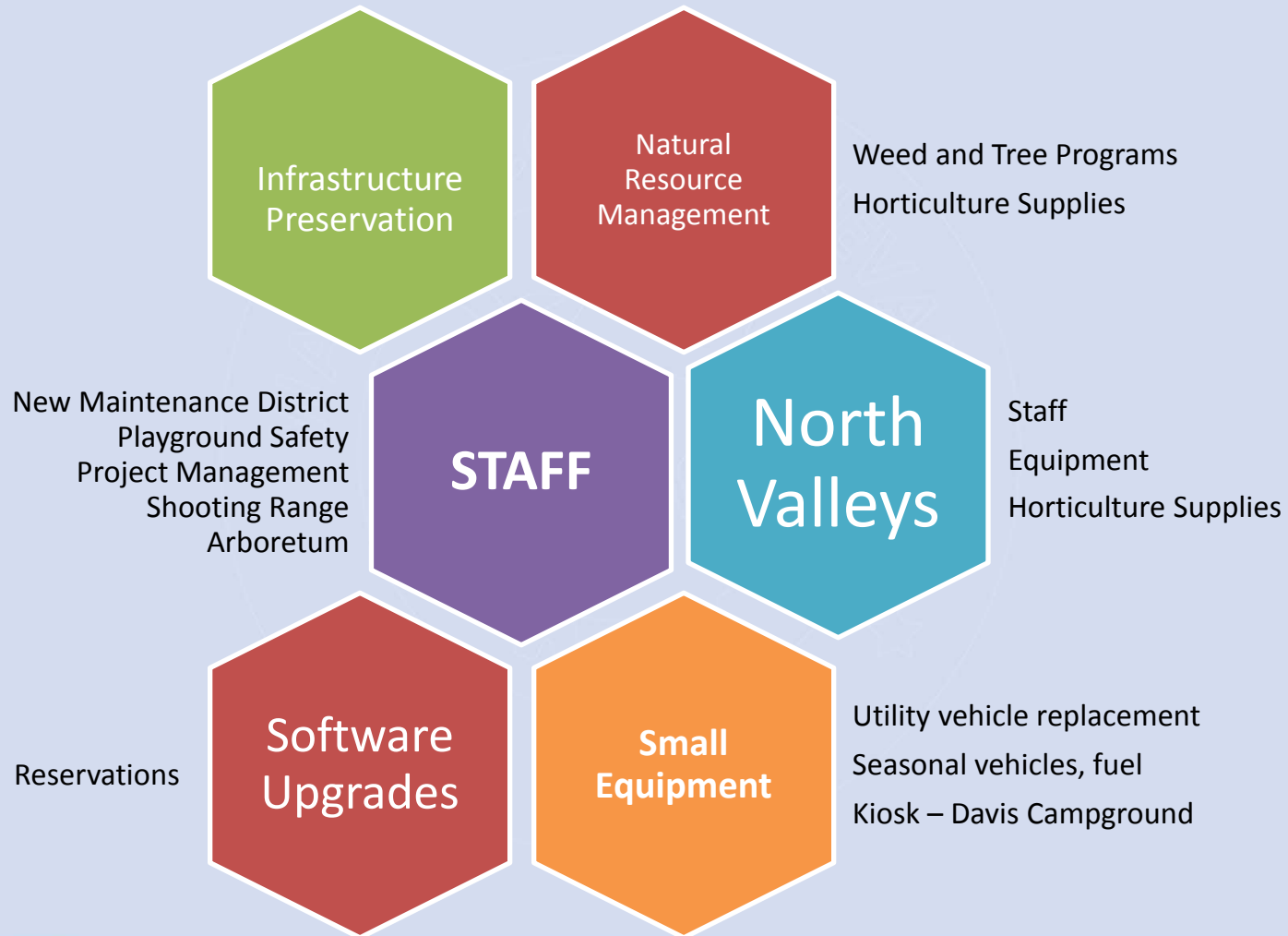
BUDGET TRENDS

Personnel



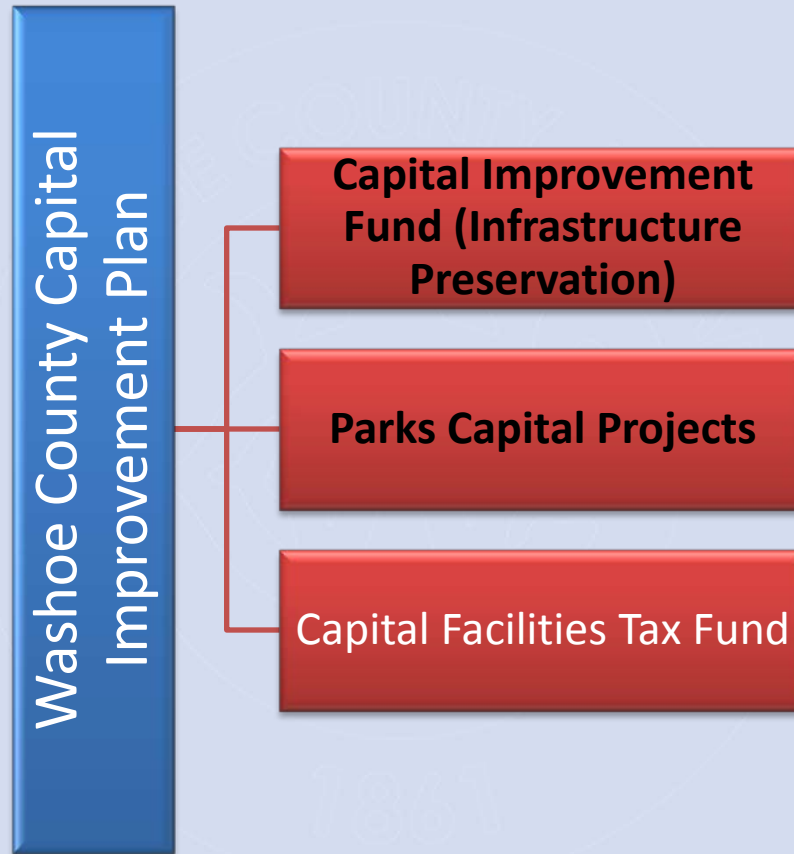


Above Base Requests





General Fund Requests





GENERAL FUND CIP REQUESTS

Dept. Priority	Project Name	Fiscal Year	Cost
3	Rancho San Rafael Regional Park Playground renovation	17	\$ 400,000
4	Bowers Regional Park Playground renovation	17	\$ 400,000
7	Bowers Pool rehabilitation project	17	\$ 433,000
13	Ellens Park Playground renovation	17	\$ 220,000
14	Hidden Valley playground renovation	17	\$ 160,000
16	Regional Shooting Facility improvements	17	\$ 300,000
17	Hidden Valley site improvements	17	\$ 300,000
15	South Valleys Regional Park Master Plan implementation	18	\$ 1,500,000*
			\$ 3,713,000



CIP NON-GENEAL FUND PROJECTS

Project Name	Year	Cost	Funding Source
Bowers Mansion South Parking Lot Paving	17	\$ 250,000	WC-1
Callahan Park Playground rehabilitation	17	\$ 160,000	RCT
Crystal Bay Park	17	\$ 506,800	RCT
Crystal Peak Park pave access road	17	\$ 262,000	WC-1/RCT
Eagle Canyon Park Playground rehabilitation	17	\$ 220,720	RCT
Eagle Canyon Park Parking Lot Paving	17	\$ 100,000	RCT
Galena School House restoration	17	\$ 90,000	RCT
Galena Terrace Park	17	\$ 229,000	RCT
Gator Swamp Park Playground rehabilitation	17	\$ 220,000	RCT
Golden Eagle Trailhead Improvements	17	\$ 300,000	WC-1



CIP NON-GENEAL FUND PROJECTS

Project Name	Year	Cost	Funding Source
Michael D. Thompsen Trailhead improvements	17	\$ 126,432	WC-1
North Valleys Regional Park Phase 5	17	\$ 1,251,500	Water Rights
Persigehl Trust Land Acquisition	17	\$ 3,330,707	WC-1
Rancho San Rafael Regional Park Irrigation Phase 2	17	\$ 1,400,000	WC-1
Thomas Creek Park Playground rehabilitation	17	\$ 220,720	RCT
Whites Creek Park Playgournd Rehabilitation	17	\$ 220,720	RCT
Lake Tahoe Bike Path	17	\$ 880,000	WC-1
Lazy 5 Regional Park Master Plan implementation	18	\$ 1,000,000	Sky Ranch/RCT
North Valleys Regional Park Master Plan Implementation	19	\$ 1,000,000	RCT
		\$ 11,768,599	



BUDGET WORKSHOP – APRIL 5, 2016

Open Space and Regional Parks Commission

Questions?

